



**BENJAMIN
STEVENS.**
estate agents



Aspen Place, Bushey WD23 1FW

Offers In Excess Of £499,950

A beautifully presented bright and spacious TWO DOUBLE BEDROOM, TWO BATHROOM SECOND FLOOR APARTMENT forming part of the sought after Aspen place development in the heart of Bushey Heath, conveniently located and within walking distance to all local shopping and transport facilities. The property is being offered in excellent decorative order and benefits from: Video Entryphone System, Lift, Double Glazed Windows, Gas Fired Heating To Radiators, Underfloor Heating, Reception Room, Fully Fitted Kitchen/Breakfast Room, Bedroom One With En Suite Shower Room, Bedroom Two, Bathroom, Communal Grounds, Allocated Parking.

NO UPPER CHAIN

Aspen Place, Bushey WD23 1FW

Exterior:



Reception Room:



Communal Entrance Hall:



Reception Room:



Entrance Hall:



Kitchen/Breakfast Room:



Aspen Place, Bushey WD23 1FW

Kitchen/Breakfast Room:



Bedroom Two:



Bedroom One:



Bathroom:



En Suite Shower Room:



Communal Grounds:



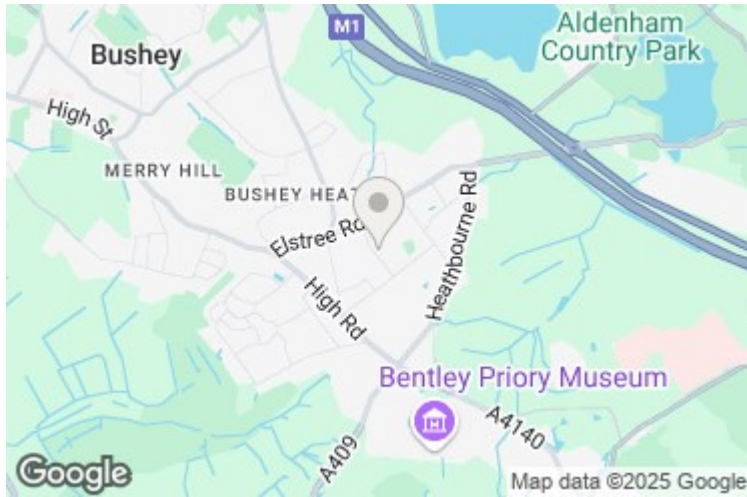
Tenure:

This is a leasehold property and to the best of their knowledge the vendor advises us that there are approximately 117 years remaining on the lease with a combined annual ground rent and service charge of approximately £3640 per annum. Council Tax Band E - Approximately £2,440 per annum. As always, buyers are recommended to gain verification from their solicitor during the conveyancing process.

Aspen Place, Bushey WD23 1FW

Disclaimer:

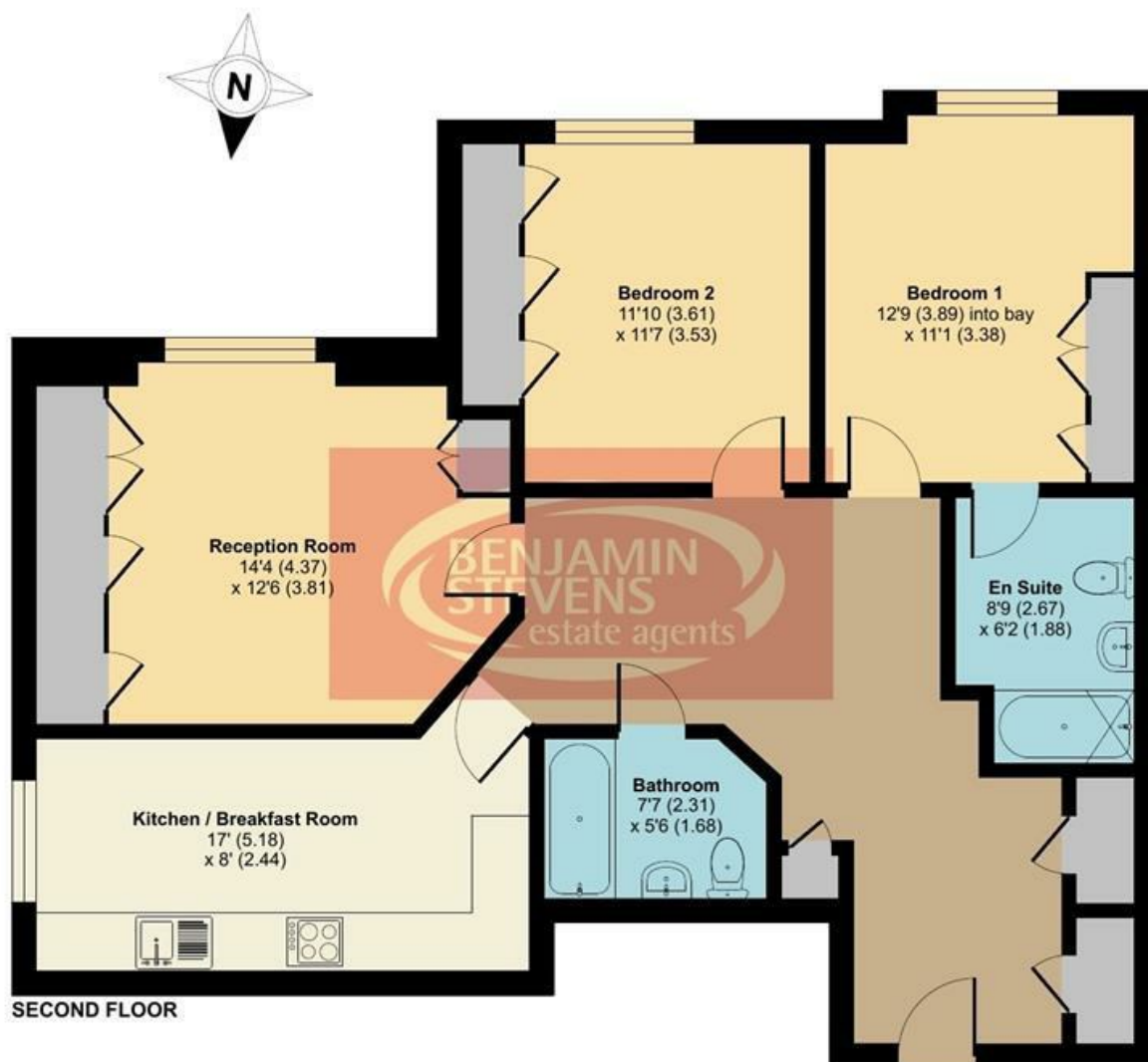
While every care and effort has been made to ensure these details are correct their accuracy cannot be guaranteed and so should not form part of any contract.



Oak View, Aspen Place, Bushey Heath, Bushey, WD23

Approximate Area = 972 sq ft / 90.3 sq m

For identification only - Not to scale



Floor plan produced in accordance with RICS Property Measurement Standards incorporating International Property Measurement Standards (IPMS2 Residential). © nichecom 2024. Produced for Benjamin Stevens. REF: 1178262

